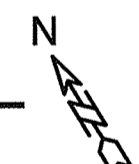


STORAGE ABOVE NOSE OF CARS
 TYPICAL SIZE: 3' WIDE, 4'-0" AND 8'-0" LONG
 PROVIDING 96 CUBIC FOOT OF STORAGE

P-2 LEVEL PARKING
 1/8"=1'-0"

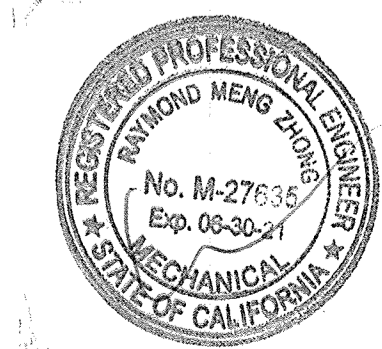


M-4
 P-2 PARKING GARAGE FLOOR PLAN NUMBERED NOTES:

- 1) 60" X 24" EXHAUST AIR DUCT, THRU THE FIRE RATED SHAFT, UP THRU ROOF (9,570 CFM + 8,820 CFM = 18,390 CFM)
- 2) 3-1/4" X 10" EAD UP FROM BELOW P-3 (EXHAUST AIR: 200 CFM)
- 3) 3-1/4" X 14" OAD UP FROM BELOW P-3 (W/ BACKDRAFT DAMPER), OUTSIDE AIR 200 CFM MIN.
- 4) 16" X 6" EAD UP FROM BELOW P-3 (EXHAUST AIR: 600 CFM)
- 5) 16" X 8" OAD UP FROM BELOW P-3 (W/ BACKDRAFT DAMPER), OUTSIDE AIR 600 CFM MIN.
- 6) 3-1/4" X 10" EAD UP FOR P-2 (EXHAUST AIR: 200 CFM)
- 7) 3-1/4" X 14" OAD UP FOR P-2 (W/ BACKDRAFT DAMPER), OUTSIDE AIR 200 CFM MIN.
- 8) 12" X 8" DUCT GARAGE EXHAUST AIR INTAKE (W/ 1/4" GALV MESH SCREEN) W/ M.V.D. AT BELOW CEILING. EXHAUST AIR 980 CFM EACH. (TYPICAL OF 9)

M-4
 MECH. ROOM VENTILATION (OUTSIDE AIR/EXHAUST AIR)
 CALCULATION (EF-9):

- 1) TOTAL SQ.FT. BICYCLE/MECH ROOM = 170 S.F.
- 2) PER CMC 2019, TABLE 403.7, FOR BICYCLE ROOM AREA EXHAUST AIR RATE = 1.0 CFM/S.F.
- 3) TOTAL OUTSIDE AIR = 170 X 1 = 170 CFM
- 4) WE USE (1) 200 CFM EXHAUST FAN = 200 CFM > 170 CFM
- 5) EXHAUST AIR CFM = MAKE UP AIR CFM = 200 CFM
- 6) SO, OK !



38 UNITS OF APARTMENT
 1815 - 1821 S. BRAND
 GLENDALE, CA.

Date 11-23-2020
 Scale
 Drawn T.L.
 Job # F20-1139
 Sheet
M-4
 Of Sheets

PERFECT DESIGN & INVESTMENT, INC.
 Design & Consulting
 Air-Conditioning, Plumbing, Fire Sprinkler System,
 Electrical, Title & Energy Calculation.
 2416 W. Valley Blvd.
 Alhambra, CA 91803
 Tel: (626) 289-8808
 Fax: (626) 289-4913
 E-Mail: PERFECTM&I@aol.com